

## Contact Details

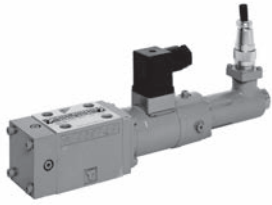
Before using the product, please check the guide pages at the front of this catalog.

Internet

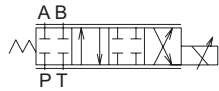
<http://www.daikinpmc.com/en/>

For latest information, PDF catalogs and operation manuals

# Direct Operated Servo Valve



JIS graphic symbols for hydraulic system



## Features

- Ideal for closed loop control of the position, speed, and pressure of main machine's actuators because of the high responsiveness achieved by combining the valve with the dedicated driver. (Frequency response: 130 Hz/−3 dB ±10% fluctuation)
- Driving the spool directly with a proportional solenoid reduces the amount of leakage compared to nozzle flapper type servo valves.
- When the dedicated driver is used, all ports will be blocked at power off to provide a fail safe function.

## Nomenclature

**KSPS** - **G** **02** - **※** **※** - **10** - **※** **※** **※**

1 2 3 4 5 6 7 8 9

### 1 Model No.

KSPS: Direct operated servo valve

### 2 Connections

G: Gasket mount type

### 3 Nominal diameter

02: 1/4

### 4 Rated flow rate

(1 land differential pressure:  
ΔP = 3.5 MPa {35 kgf/cm<sup>2</sup>})

1: 10 L/min

2: 20 L/min

4: 40 L/min

### 5 Pressure gain

1: 2% maximum

2: 4% maximum

### 6 Design No.

(The design No. is subject to change)

### 7 Drainage code

No designation: Internal drain type

E: External drain type

### 8 Solenoid installation orientation

No designation: Upward (standard)

R: Rightward (option)

L: Leftward (option)

### 9 Dedicated driver Front panel EPKS-02-10

No designation: With front panel (standard)

N: With front panel (option)

## Specifications

Model code	Maximum operating pressure MPa {kgf/cm <sup>2</sup> }	Rated flow rate *1 L/min	T port permissible back pressure MPa {kgf/cm <sup>2</sup> }	Pressure gain	Hysteresis, resolution, repeatability	Rated voltage of solenoid V	Maximum current mA	Mass kg
KSPS-G02-1※-10	35 {350}	10	2.5 { 25}	1st pattern: 2% maximum 2nd pattern: 4% maximum	1% or less	DC 12	1700	2.5
KSPS-G02-2※-10		20						
KSPS-G02-4※-10		40						
KSPS-G02-1※-10-E		10	16 {160}					
KSPS-G02-2※-10-E		20						
KSPS-G02-4※-10-E		40						

Note: \*1 The rated flow rate indicates the values at 1 land differential pressure: ΔP = 3.5 MPa {35 kgf/cm<sup>2</sup>}.

## Applicable driver model code

EPKS-02-10 (Supplied with the valve)

※ Driver (EPKS-02-10) is not available by itself.